



CRUISERS YACHTS

38 GLS 1/0



38 GLS ^{VO}

The 38 GLS just got sleeker with its new stern drive option. The combination of the expansive swim platform with the beach door allows you to have endless fun under the sun. The lower cabin features an aft stateroom and a U-shaped dinette that converts into a beth. A lower galley and standing head with shower complete this extraordinary yacht.

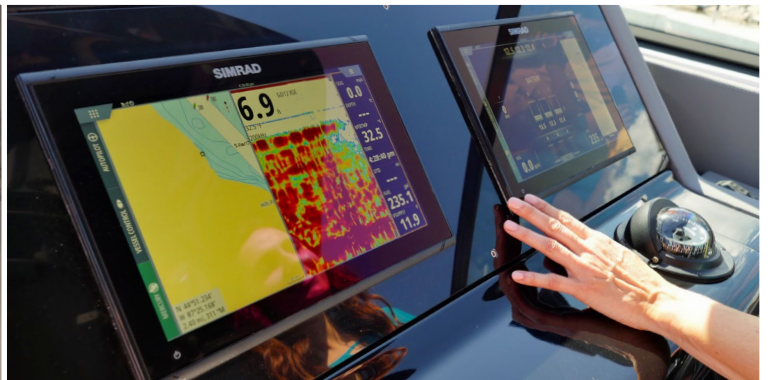


BEACH DOOR – Expand your swimming area by lowering the side of the 38 GLS to convert it into a swim platform. The optional hydraulic swim platform allows you to get in and out of the water with ease. The aft facing bench backrest can swivel to either face the cockpit or the beach door.

GALLEY – The galley features a fiberglass inlay sink, fridge, bottle storage, along with an optional TV and grill. Continue the conversation while sitting on swivel bar stools at the raised wet bar.

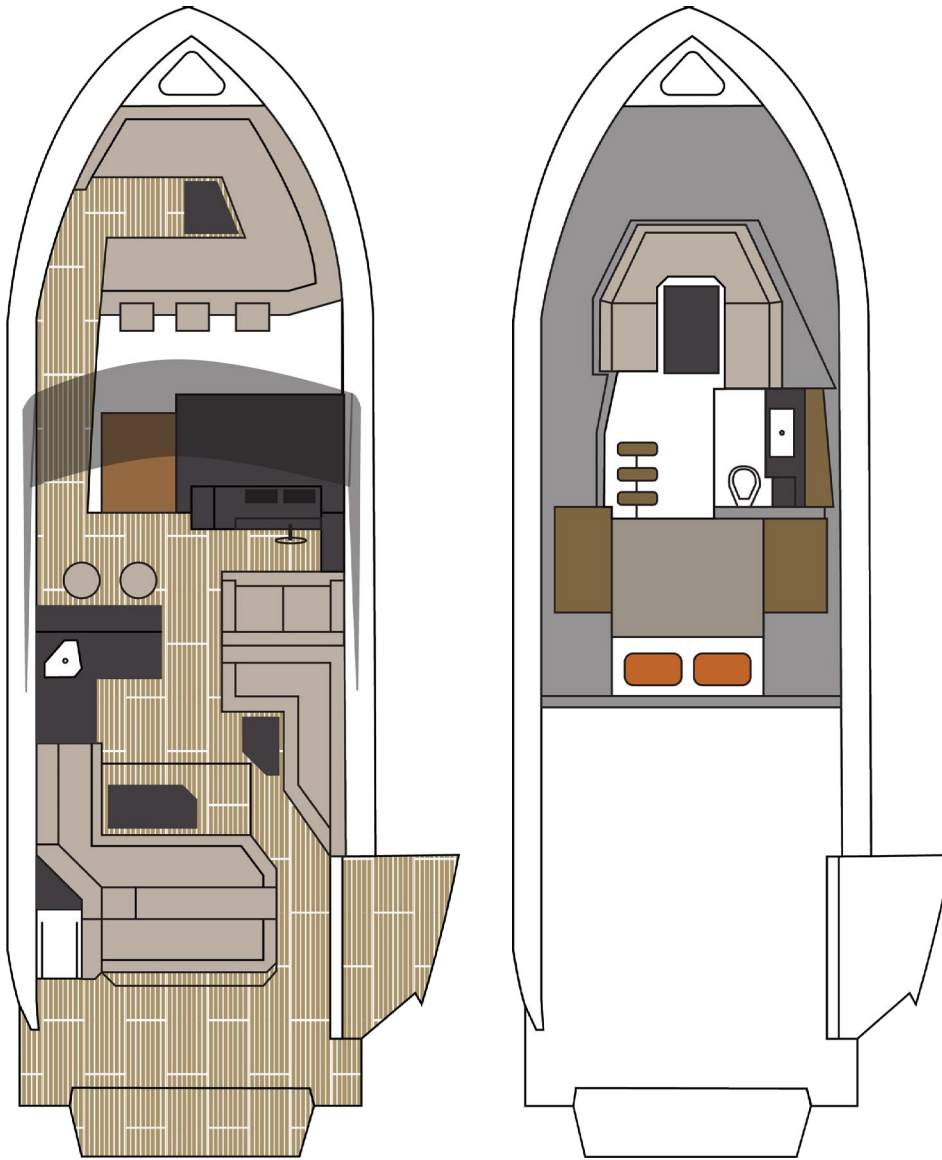


SURESHADE – For comfort, there is an opening sunroof along with an optional foredeck and aft deck shade to keep your guests out of the hot sun.



38 GLS I/O

LAYOUT & SPECIFICATIONS



Main Deck

Accommodations

SPECIFICATIONS

	IMPERIAL	METRIC
LOA	37' 3"	11,35 m
BEAM	12' 6"	3,8 m
BRIDGE CLEARANCE (TOP OF MAST LIGHT)	12' 8"	3,86 m
DRAFT DOWN	38"	0,97 m
DRAFT UP	26"	0,66 m
FUEL CAPACITY	234 gal	866 L
WATER CAPACITY	50 gal	189,3 L
WASTE CAPACITY	31 gal	117,3 L
WEIGHT – DRY	18,500 lbs	8391 kg

*** Weight, Bridge Clearance, Draft subject to change ***

*** Consumable liquids may be less than max capacity ***



HULL COLOR

White

WEATHER COVERS

Bow, Cockpit, and Seat Covers
Black or White

COCKPIT SEATING COLOR

White & Gray

INTERIOR SEATING COLOR

Neutral
Gray

INTERIOR WOOD

Dark Ebony Oak

MECHANICAL

AC/DC Panel w/ Voltmeters
Anchor
Battery Charger, 30 Amp (2)
Battery Parallel Switch
Bilge Coating, White
Bilge Pumps (3), w/High Water Alarms
Bonding Systems w/Transom Zinc
Bronze Seacocks and Thru Hulls
on all Underwater Fittings
Dockside Power – Dual 30 Amp Service
Premium Electronics
Horn
Engine Room Blowers
Fire Extinguisher, Automatic
Fire Extinguishers, Handheld (2)
Fuel Overflow Recovery System
Generator, 6 kw Diesel, 120V, Kohler
Ground Fault Interrupter Outlets
Hydraulic Trim Tabs
LED Lighting
Onan 5 kW Diesel Generator w/Sound
Shield, 120V
Power Assisted Steering
Seawater Strainers
Stainless Steel Propellers
Tilt Steering Wheel

MAIN DECK

Beach Door, Lowering
Black Framed Walk-Thru Windshield
Bow Rail, Welded Stainless Steel
Built-In Cooler with Drain
Cockpit Shower
Deck Cleats
Deluxe Cockpit w/ White Table Cover
Dockside Water Hookup
Fiberglass Cockpit, Self Draining
Gunwale Molding, Stainless Steel
Hardtop, White w/White and Gray Cock-
pit Seating
Helm Seat Storage
Polished Stainless Anchor
Storage (2), L-Shaped Seating
Sunroof, Manual Opening
Swim Platform, Fixed, Extended
Transom Boarding Gate
Wet Bar with Sink & Cold Water Faucet
Windlass
Windshield Wiper
Wireless Phone Charging Pad
Woven Mat Cockpit & Swim Platform,
Chalk Bamboo

WETBAR

Bottle Storage
Refrigerator
Sink, Set in Fiberglass
Solid Surface Countertop
TV, 28"

ACCOMODATIONS LEVEL

Aft Berth
Aft Stateroom Shelf Storage (2)
Air Conditioner, 10,000 BTU 115V
Amtico Flooring
Bilge Pump, 2200 GPH Forward
Bilge Pumps, 900 GPH in Engine
Room (2)
Electric Head w/ Holding Tank
Head Sink
Microwave Oven
Mirrors w/ Storage, Head
Opening Port Hole Above Lower Salon
Entry Stairs
Opening Port Hole in Head
Starboard Window
Refrigerator
Shower in Head
Storage, Interior

HULL

White w/ Kingston Gray Plank
White w/ Slate Gray Plank
White w/ Black Plank
Bottom Paint

MECHANICAL

Algae-X Fuel Conditioning System
SeaKeeper 3
Kohler 6 kW Diesel Generator w/Sound Shield, 120V
Kohler 5 kW Diesel Generator w/Sound Shield, 220V
Central Vacuum System, 120V or 220V
Macerator w/Overboard Discharge
Anchor Washdown System
Fresh Water Cockpit Washdown System
Reverso Engine Flush System
Underwater Lights
Mercury Radar, White or Black
Simrad VHF Radio, White or Black

MAIN LEVEL

Cockpit Seating: Sand (Ultraleather), Dolphin Gray (Ultraleather), Havana (Ultraleather)
Black Hardtop
Foredeck Shade: Gray, White, or Black
Retractable Cockpit Shade: White or Black
24" TV, Dark Ebony Oak
Electric Cockpit Grill, 120V or 220V
Helm Seat Ice Maker, 110V or 220V
Bow/Cockpit SeaDek, Gray or Saddle

PACKAGES

South Beach Edition: Kingston Gray Hull w/Havana Seating
Towel Package (1 Set)
Exterior Pillow Package

ENGINE OPTIONS

GAS ENGINES

Volvo V8, Joystick, 430 HP
Mercury 8.2 Mag, 430 HP
Mercury 8.6, 520 HP Racing

DIESEL ENGINES

Volvo D4, Joystick, 320 HP

38 GLS I/O

COLORS & MATERIALS

HULL COLORS



White Hull



White Hull
w/ Black Plank



White Hull
w/ Kingston Gray Plank



White Hull
w/ Slate Gray Plank

COLORS
SHOWN ON
A 38 GLS OB

ENGINE COLORS



Black



White

HARDTOP COLORS



Black



White

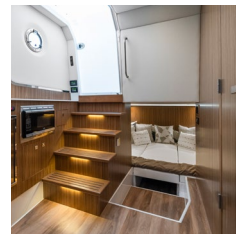
FLOORING



SeaDek Gray



SeaDek Saddle



Amtico

INTERIOR WOOD



Dark Ebony Oak

COCKPIT SEATING



White & Gray



Sand
(Ultraleather)



Dolphin Gray
(Ultraleather)



Havana
(Ultraleather)

COCKPIT PILLOW PACKAGE

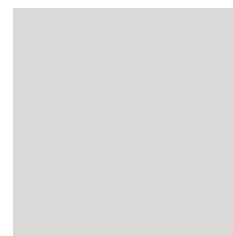


Blue

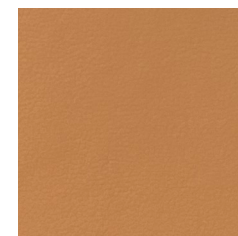


Orange

SOUTH BEACH PACKAGE



Kingston Gray
Hull



Havana
Seating

INTERIOR BEDDING - NEUTRAL



Master Stateroom

Throw



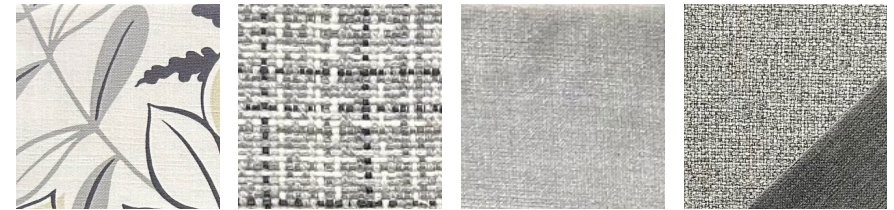
VIP Stateroom

Throw



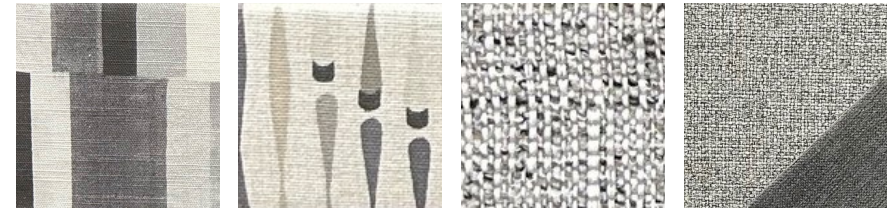
3rd Stateroom

INTERIOR BEDDING - GREY



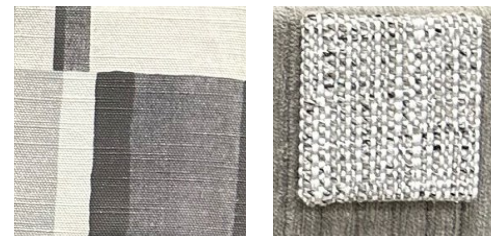
Master Stateroom

Throw



VIP Stateroom

Throw



3rd Stateroom



CRUISERS YACHTS

CRUISERSYACHTS.COM