



CRUISERS YACHTS

**57FLV**



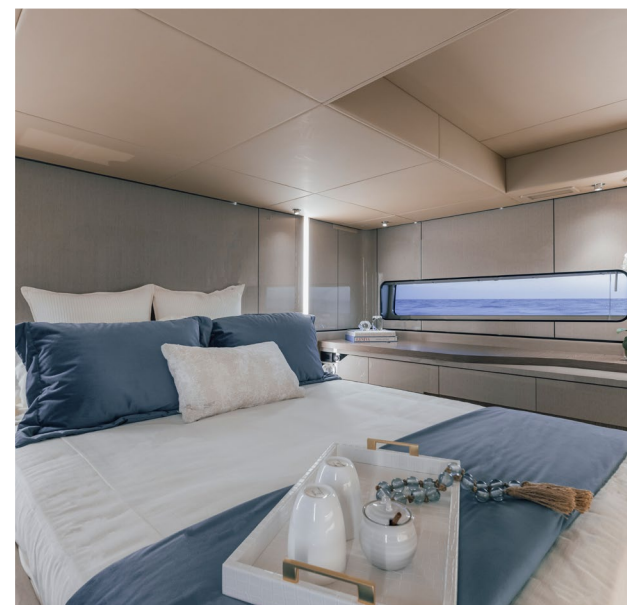
# 57 FLY

The all-new 57 FLY redefines luxury on the water with a best-in-class flybridge, offering the most accommodations for entertaining, superior water interaction, and a fresh, modern interior—all while maintaining the iconic Cruisers Yachts DNA. Enjoy panoramic views, advanced helm controls, and ample seating on the flybridge. The main deck impresses with a state-of-the-art helm, versatile seating, and a fully equipped galley seamlessly connected to an inviting veranda, perfect for socializing. With an expansive bow, submersible swim platform, and lavish accommodations—including three staterooms, two heads, and crew quarters—the 57 FLY offers an unparalleled yachting experience.

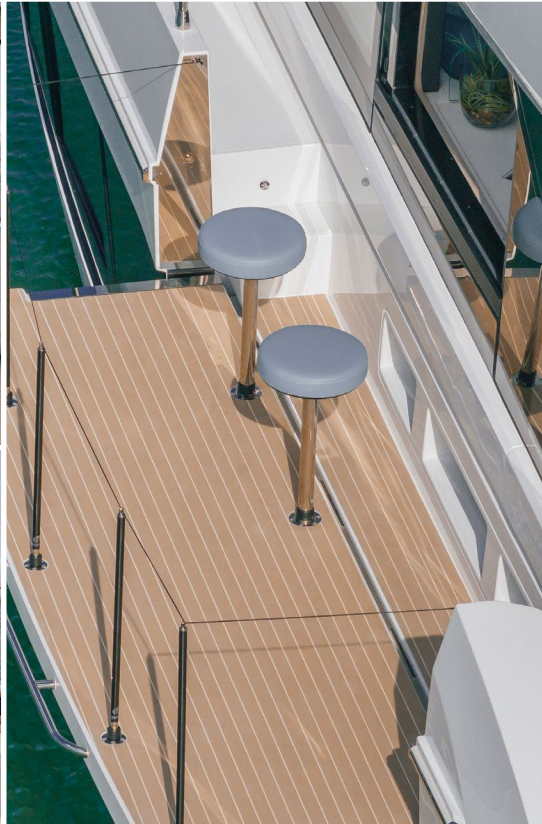


**UPPER SALON** – Step into the upper salon through a generous sliding entry door, effortlessly blending the indoor space with the outdoors. Expansive glass windows offer panoramic views, flooding the area with natural light and providing a clear line of sight for easy navigation from the helm.

**FLYBRIDGE** – The flybridge, a standout feature of this yacht, is equipped with a robust fiberglass hardtop. It offers ample seating for up to 12 guests on the aft U-shaped settee, complete with a hi-lo table, while the forward U-shaped seating provides room for an additional 3 guests, with convenient storage beneath.

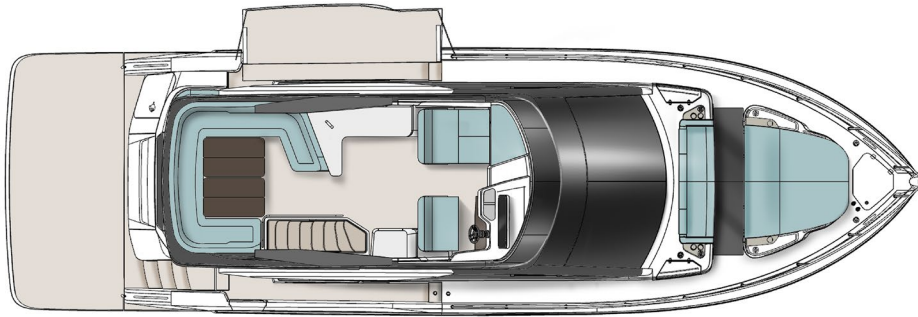


**MASTER STATEROOM** – The opulent full-beam master stateroom boasts a generously sized queen berth flooded with natural light, offering a haven of comfort. The starboard side features two plush settees surrounding a table, creating a serene lounge area.

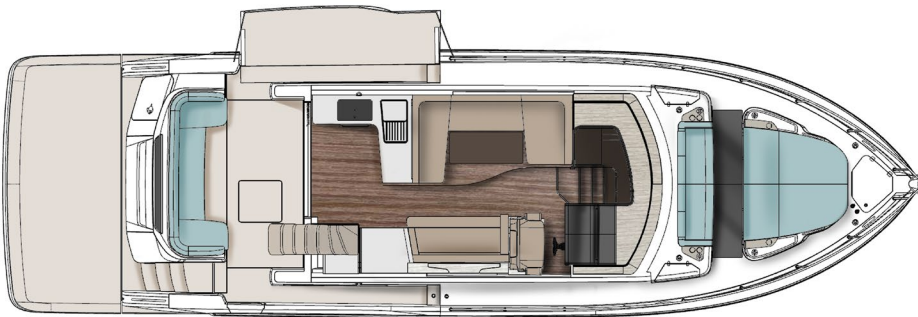


# 57FLV

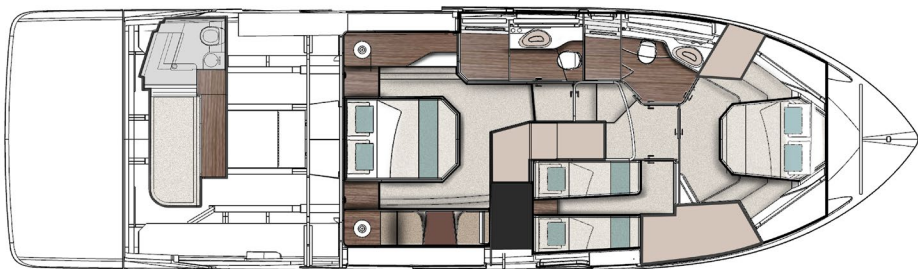
## LAYOUT & SPECIFICATIONS



Flybridge



Main Deck



Accommodations

### SPECIFICATIONS

	IMPERIAL	METRIC
<b>LOA</b>	57'	17,4 m
<b>BEAM</b>	16'6"	5 m
<b>BRIDGE CLEARANCE (TOP OF MAST LIGHT)</b>	22' 9"	6.9 m
<b>DRAFT</b>	4'4"	1.3 m
<b>FUEL CAPACITY</b>	611 gal	231,9 L
<b>WATER CAPACITY</b>	150 gal	567.8 L
<b>WASTE CAPACITY</b>	95 gal	360 L
<b>WEIGHT – DIESEL (DRY)</b>	58,000 lbs	26308 kg
<b>MAXIMUM TENDER WEIGHT</b>	800 lbs	363 kg

\*\*\* Weight, Bridge Clearance, Draft subject to change \*\*\*

\*\*\* Consumable liquids may be less than max capacity \*\*\*



### HULL COLOR

White

### WEATHER COVERS

Bow Seat  
Cockpit Seat  
Windshield Sunscreen  
Covers  
Black

### EXTERIOR SEATING COLOR

Raindrop  
Sand

### BOW & CHAISE LOUNGE SEATING

Raindrop  
Sand

### INTERIOR WOOD

Ocean Sand Oak

### FLOORING

Amtico Main Level Flooring  
Cockpit Woven Mat Flooring  
Flybridge Woven Mat Flooring

### INSTRUMENTS

Autopilot  
Compass  
Garmin Sonar, Dual 16" Displays  
4kW HD Open Radar  
Horn  
Remote Spotlight  
VHF Radio  
Volvo IPS Joystick  
Volvo DPS  
(Digital Positioning System)

### MECHANICAL

AC/DC Panel w/Voltmeters  
Automatic Fire Extinguisher in  
Engine Room  
Bilge Pumps (2 FWD & 1 Engine Room)  
Bilge Pumps (3) w/High Water Alarm  
Bonding System w/ Transom Zinc  
Bronze Seacocks & Thru Hulls on  
All Underwater Fittings  
Central Vacuum System  
Dual Dockside Power 50A/60Hz  
Diesel Generator 17KW w/Sound  
ShieldEngine Room Blowers  
Ground Fault Interrupter Outlets  
Handheld Fire Extinguishers (5)  
Hydraulic Trim Tabs  
LED Lighting  
Seakeeper 9  
Seawater Strainers  
Tilt Steering Wheel

### MAIN DECK

Air Conditioning  
50 lb Anchor  
Anti-Fouling Bottom Paint  
Bow Hatch w/ Screen & Shade  
Bow Lounge w/ Flip Up Backrests  
Bow Skylight w/ Shade  
Double Wide Helm  
Opening Salon Windows w/ Blinds  
Panoramic View Windows  
Portside Veranda  
Portuguese Seating Aft of Lounge  
w/ Storage  
Pop Up Lights  
Power Dinette Table That Converts to  
Coffee Table  
Power Lift for TV  
55" QLED TV & Stereo w/ HDMI Outlet  
Recessed Windlass w/ Foot Pedals

Removable Veranda Bar Stools  
Removable Bow Table  
Sliding Salon Entry Door  
Speakers  
Stainless Steel Anchor Roller  
Stainless Steel Gunwale Molding  
Storage Under Lounge  
U-Shaped Dinette Seating w/ Opposed  
Bench Seating  
Welded Stainless Bow Rails  
Wide Side Deck Walkways  
Windshield Wipers / Washdown

### GALLEY

Fridge, 6.3 cu ft  
Fridge, 3.7 cu ft  
Freezer, 2.6 cu ft  
Kenyon Electric 2-Burner Stove, 120v  
Microwave w/ Convection Oven,  
1 cu ft 120v  
Set-In Stainless Steel Sink  
w/ Designer Faucet  
Solid Surface Galley Countertop

### COCKPIT & TRANSOM

Boarding Gate  
Cockpit Shower  
Cockpit Woven Mat, Thatch Pebble  
12" Deck Cleats  
Dockside Water Hookup  
Fender Storage Under Aft Seating  
Fixed Cockpit Table  
Head w/ Shower  
Self Draining Fiberglass Cockpit  
Starboard Boarding Gate  
Storage  
Swim Platform, Hi-Lo w/ Boarding Ladder  
U-Shaped Aft Cockpit Seating

### FLYBRIDGE LEVEL

Courtesy Lighting  
Double Wide Helm Seat  
Fiberglass Hardtop  
Forward L-Shaped Seating  
Helm Joystick  
Port Wet Bar w/ Storage  
Port Fridge, 3 cu ft  
Port Sink  
4 Speakers w/ Subwoofer  
Starboard Wet Bar w/ Storage  
USB Charging Ports  
U-Shaped Seating Aft  
Volvo Engine Data At Helm

### ACCOMODATIONS LEVEL

Day Head w/ Private VIP Stateroom Access  
w/ Separate Adjoining Shower  
Carpet  
Heads, Opening Windows  
Master Stateroom, Clothes Locker  
Master Stateroom, Drawer Storage  
Master Stateroom, Large Fixed Glass  
Windows w/ Openings  
Master Stateroom, Private head w/ Separate  
Adjoining Shower  
Master Stateroom, Queen Size Berth  
Master Stateroom, Seating Area  
Third Stateroom  
Third Stateroom, Large Fixed Glass  
Windows w/ Openings  
Third Stateroom, 32" TV & Stereo w/ HDMI  
Outlet  
VIP Stateroom, Clothes Locker  
VIP Stateroom, Large Fixed Glass Windows  
VIP Stateroom, Queen Size Berth  
VIP Stateroom, 32" TV & Stereo  
w/ HDMI Outlet  
Washer/Dryer Combo 120v/220v



## ENGINE OPTION

Volvo Penta D11 IPS 725HP

## HULL

Kingston Gray  
Black

## MECHANICAL

Algae-X Fuel Conditioning System  
Batteries  
Cockpit Joystick Remote Docking Station  
Desalinator Watermaker, 230V, 50/60Hz  
Dual Dockside 50A/60Hz w/Iso-Boost Transformer  
Diesel Generator, 21kW or 20.5kW w/ Sound Shield  
KVH TracVision Antennas Only 120V or 220V  
Macerator w/ Overboard Discharge  
Starlink  
Oil Change System  
Underwater Lighting  
Volvo Remote Joystick Docking

## FLYBRIDGE LEVEL

Additional Refrigerator, 3 cu ft  
Hatch Entrance  
Ice Maker, 0.8 cu ft  
Permateek Flooring  
Real Teak Flooring  
Texan Grill, 310 sq in

## MAIN LEVEL

Cockpit Real Teak Decking  
Cockpit Permateek, Sandstone  
Galley Dishwasher  
Foredeck Shade  
Real Teak Cockpit Flooring  
Performance Textiles Bow Shade  
Permateek Cockpit Flooring  
Swim Platform, Real Teak Decking  
Swim Platform, Permateek, Sandstone  
Transom Power Seat, Sand or Raindrop

## ACCOMODATIONS LEVEL

Master Stateroom Wine Cooler, 23 Bottle Capacity

## PACKAGES

Exterior Pillow Package, Colors: Neutral, Blue or Orange  
Crew's Quarters Package: Air Conditioning 6,000  
BTU, 1.8 cu ft Fridge, Macerator w/ Overboard Discharge

### HULL COLORS



White



Black

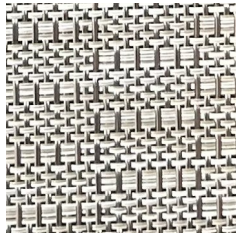


Kingston Gray

### FLOORING



Permateek  
Sandstone



Woven Mat  
Thatch Pebble

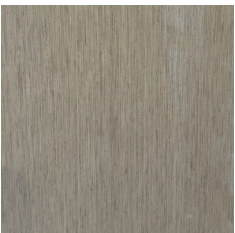


Upper Salon  
Flooring

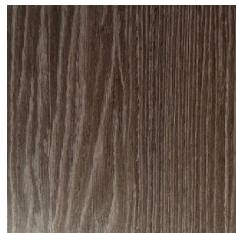


Lower Salon  
Flooring

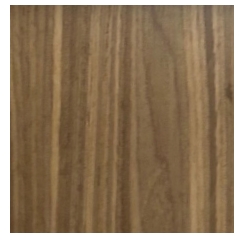
### INTERIOR WOOD



Ocean Sand Oak



Accent Wood 1

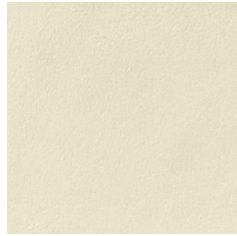


Accent Wood 2

### EXTERIOR SEATING

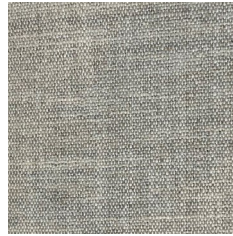


Raindrop



Sand

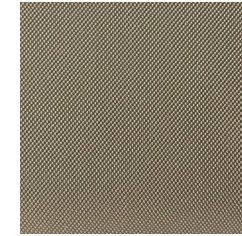
### UPPER SALON SEATING



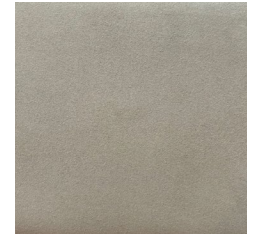
Neutral Seating



Accent Pillow 1



Accent Pillow 2



Accent Pillow 3

### INTERIOR ACCENT FABRIC



Interior Fabric 1



Interior Fabric 2



Interior Fabric 3

### COCKPIT PILLOW PACKAGE



Blue



Orange



Neutral





**MASTER INTERIOR BEDDING**



**VIP INTERIOR BEDDING**



**THIRD STATEROOM**



**CRUISERS YACHTS**

[CRUISERSYACHTS.COM](http://CRUISERSYACHTS.COM)