



CRUISERS YACHTS

38 GLS 1/0



38 GLS IO

Designed for unforgettable days on the water, the 38 GLS IO combines an expansive lowering swim platform and beach door to create an effortless connection to the water. A versatile cockpit layout, wet bar seating, and spacious bow lounge provide multiple areas to relax and entertain guests throughout the day. Below deck, the inviting cabin features an aft stateroom, convertible U-shaped dinette, lower galley, and standing head with shower—perfect for day cruising or spontaneous overnight escapes.



BEACH DOOR – Expand your swimming area by lowering the side of the 38 GLS to convert it into a swim platform. The optional hydraulic swim platform allows you to get in and out of the water with ease. The aft facing bench backrest can swivel to either face the cockpit or the beach door.

GALLEY – The galley features a fiberglass inlay sink, fridge, bottle storage, along with an optional TV and grill. Continue the conversation while sitting on swivel bar stools at the raised wet bar.

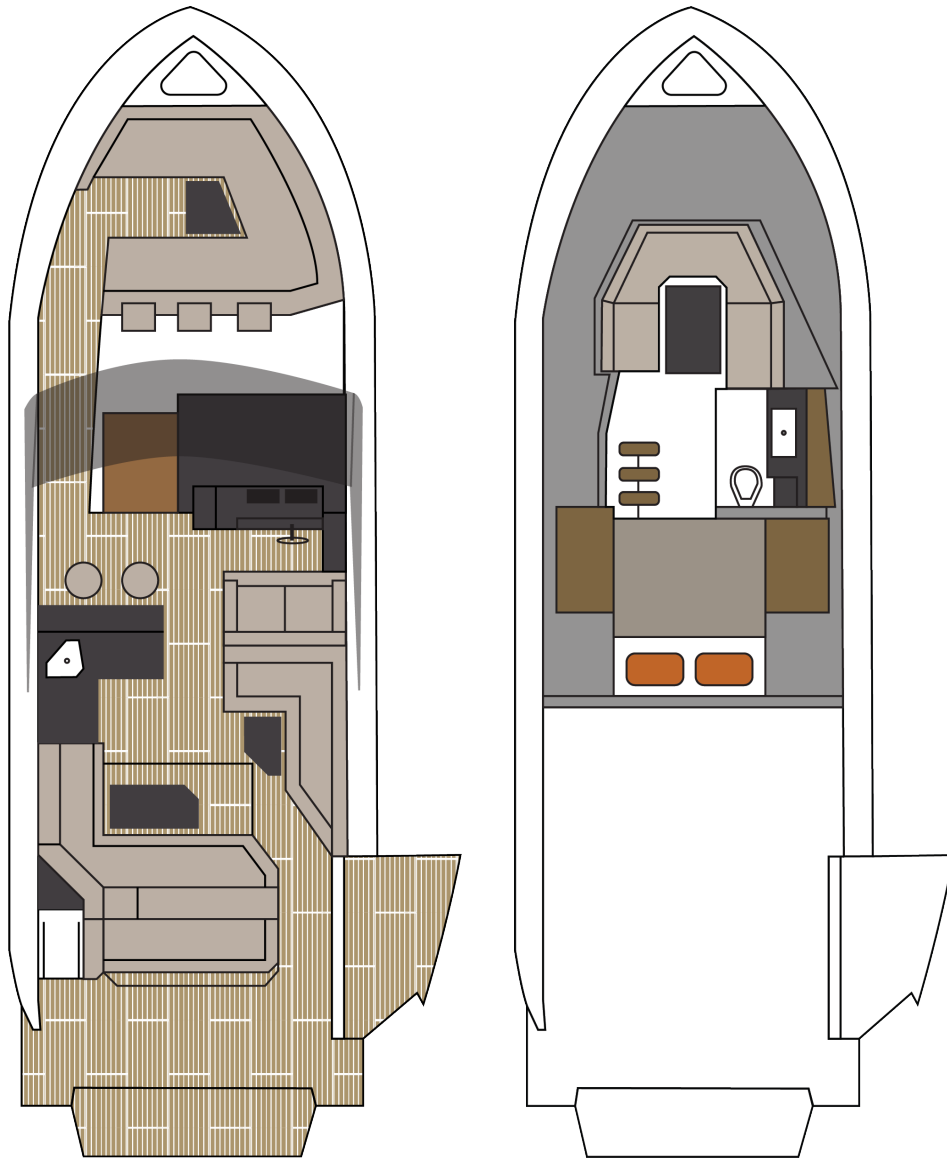


SURESHADE – For comfort, there is an opening sunroof along with an optional foredeck and aft deck shade to keep your guests out of the hot sun.



38 GLS I/O

LAYOUT & SPECIFICATIONS



Main Deck

Accommodations

SPECIFICATIONS

	IMPERIAL	METRIC
LOA	37' 3"	11.35 m
BEAM	12' 6"	3.8 m
BRIDGE CLEARANCE (TOP OF MAST LIGHT)	12' 8"	3.86 m
DRAFT DOWN	38"	0.97 m
DRAFT UP	26"	0.66 m
FUEL CAPACITY	234 gal	866 L
WATER CAPACITY	50 gal	189.3 L
WASTE CAPACITY	31 gal	117.3 L
WEIGHT – DRY	18,500 lbs	8391 kg

*** Weight, Bridge Clearance, Draft subject to change ***

*** Consumable liquids may be less than max capacity ***



HULL COLOR

White

WEATHER COVERS

Bow and Seat Covers
Black or White

SEATING COLOR

Cockpit Seating: White & Gray
Interior Seating: Neutral or Gray

INTERIOR WOOD

Dark Ebony Oak

MECHANICAL

AC/DC Panel w/Voltmeters
Anchor
Battery Charger, 30 Amp (2)
Battery Parallel Switch
Bilge Coating, White
Bilge Pumps (3), w/High Water Alarms
Bonding Systems w/Transom Zinc
Bronze Seacocks and Thru Hulls
on all Underwater Fittings
Dockside Power – Dual 30 Amp Service
Engine Room Blowers
Fire Extinguisher, Automatic
Fire Extinguishers, Handheld (2)
Fuel Overflow Recovery System
Generator, 6 kg Diesel, 120V, Kohler
Ground Fault Interrupter Outlets
Horn
Hydraulic Trim Tabs
LED Lighting
Onan 5 kW Diesel Generator
w/Sound Shield, 120V
Power Assisted Steering
Premium Electronics
Seawater Strainers
Stainless Steel Propellers
Tilt Steering Wheel

MAIN DECK

Beach Door, Lowering
Black Framed Walk-Thru Windshield
Bow Rail, Welded Stainless Steel
Built-In Cooler with Drain
Cockpit Shower
Deck Cleats
Deluxe Cockpit w/White Table Cover
Dockside Water Hookup
Fiberglass Cockpit, Self Draining
Gunwale Molding, Stainless Steel
Helm Seat Storage
Polished Stainless Anchor
Storage (2), L-Shaped Seating
Swim Platform, Fixed, Extended
Transom Boarding Gate
Wet Bar with Sink & Cold Water Faucet
White Hardtop w/Black Manual
Opening Sunroof
Windlass
Windshield Wiper
Wireless Phone Charging Pad
Woven Mat Cockpit & Swim Platform,
Chalk Bamboo

WET BAR

Bottle Storage
Refrigerator
Sink, Set in Fiberglass
Solid Surface Countertop
28" TV

ACCOMMODATIONS LEVEL

Aft Berth
Aft Stateroom Shelf Storage (2)
Air Conditioner
Amtico Flooring
Electric Head w/Holding Tank
Head Sink
Microwave Oven
Mirrors w/ Storage, Head
Opening Port Hole Above Lower
Salon Entry Stairs
Opening Port Hole in Head
Refrigerator
Starboard Window
Shower in Head
Storage, Interior

HULL

White
White w/Kingston Gray Planking
White w/Slate Gray Planking
White w/Baltic Blue Planking
White w/Black Planking
Bottom Paint

MECHANICAL

Algae-X Fuel Conditioning System
Anchor Washdown System
Central Vacuum System, 120V or 220V
Fresh Water Cockpit Washdown System
Kohler 6 kW Diesel Generator w/Sound Shield, 120V
Kohler 5 kW Diesel Generator w/Sound Shield, 220V
Macerator w/Overboard Discharge
Mercury Radar, Black or White
Reverso Engine Flush System
SeaKeeper 3
Simrad VHF Radio, Black or White
Underwater Lights

MAIN LEVEL

Black Hardtop
Bow/Cockpit SeaDek, Gray or Saddle
Cockpit Seating: Ultraleather Dolphin Gray, Ultraleather Havana,
Ultraleather Raindrop, or Ultraleather Sand
Foredeck Shade: Gray, Black, or White
Electric Cockpit Grill, 120V or 220V
Helm Seat Ice Maker, 110V or 220V
Retractable Cockpit Shade, Black or White
Seat Weather Covers, Black or White
24" TV

PACKAGES

Exterior Pillow Package, Blue or Orange
South Beach Edition: Kingston Gray Hull w/Havana Seating
Towel Package (1 Set)

ENGINE OPTIONS

GAS ENGINES

Volvo V8, Joystick, 430 HP
Mercury 8.2 Mag, 430 HP
Mercury 8.6, 520 HP Racing

DIESEL ENGINES

Volvo D4, Joystick, 320 HP

HULL COLORS



White



White w/
Kingston Gray Planking



White w/
Slate Gray Planking



White w/
Baltic Blue Planking



White w/
Black Planking

HARDTOP COLORS

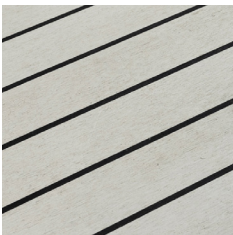


Black



White

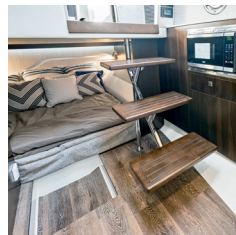
FLOORING



SeaDek Gray

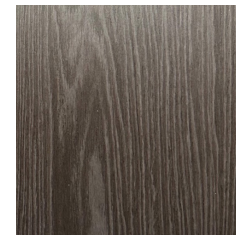


SeaDek Saddle



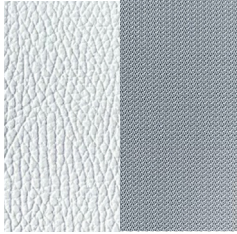
Amtico

INTERIOR WOOD



Dark Ebony Oak

COCKPIT SEATING



White & Gray



Ultraleather Dolphin Gray



Ultraleather Havana



Ultraleather Raindrop



Ultraleather Sand

COCKPIT PILLOW PACKAGE

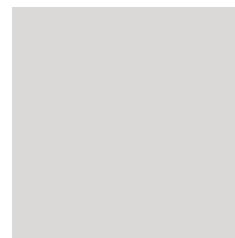


Blue

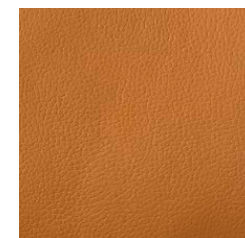


Orange

SOUTH BEACH PACKAGE

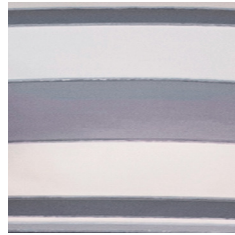


Kingston Gray
Hull

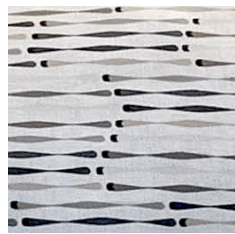


Havana
Seating

INTERIOR BEDDING - NEUTRAL



INTERIOR BEDDING - GREY





CRUISERS YACHTS

CRUISERSYACHTS.COM